

# Case Studies

Optimize Manufacturing & Distribution

# Cases Studies

Greater Success through Capacity Planning & Production Scheduling



**CLIENT:**

Johnson & Johnson The Anspach Effort, Inc.,

**INDUSTRY:**

Medical Devices and Industrial Equipment

---



**CLIENT:**

Bema Incorporated

**INDUSTRY:**

Flexible Packaging Printing and Manufacturing

---



**CLIENT:**

Atlantic Coffee

**INDUSTRY:**

Coffee Producers / Ecom Agroindustrial Corp.

---



# THE GREAT OVERTURN

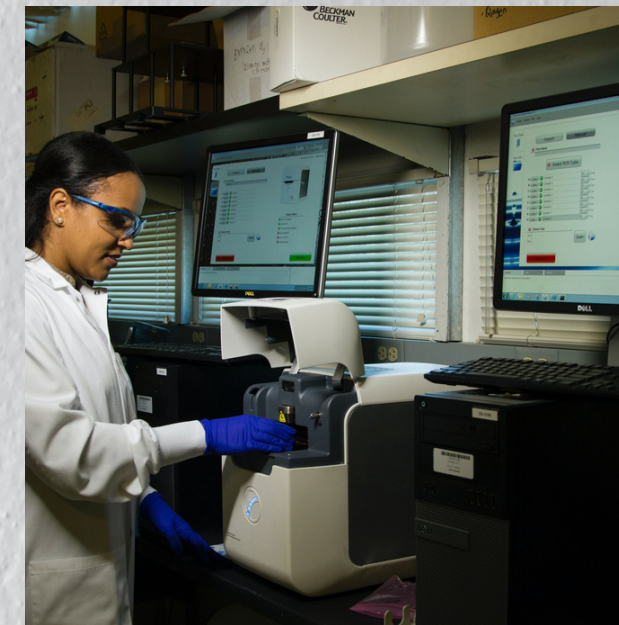
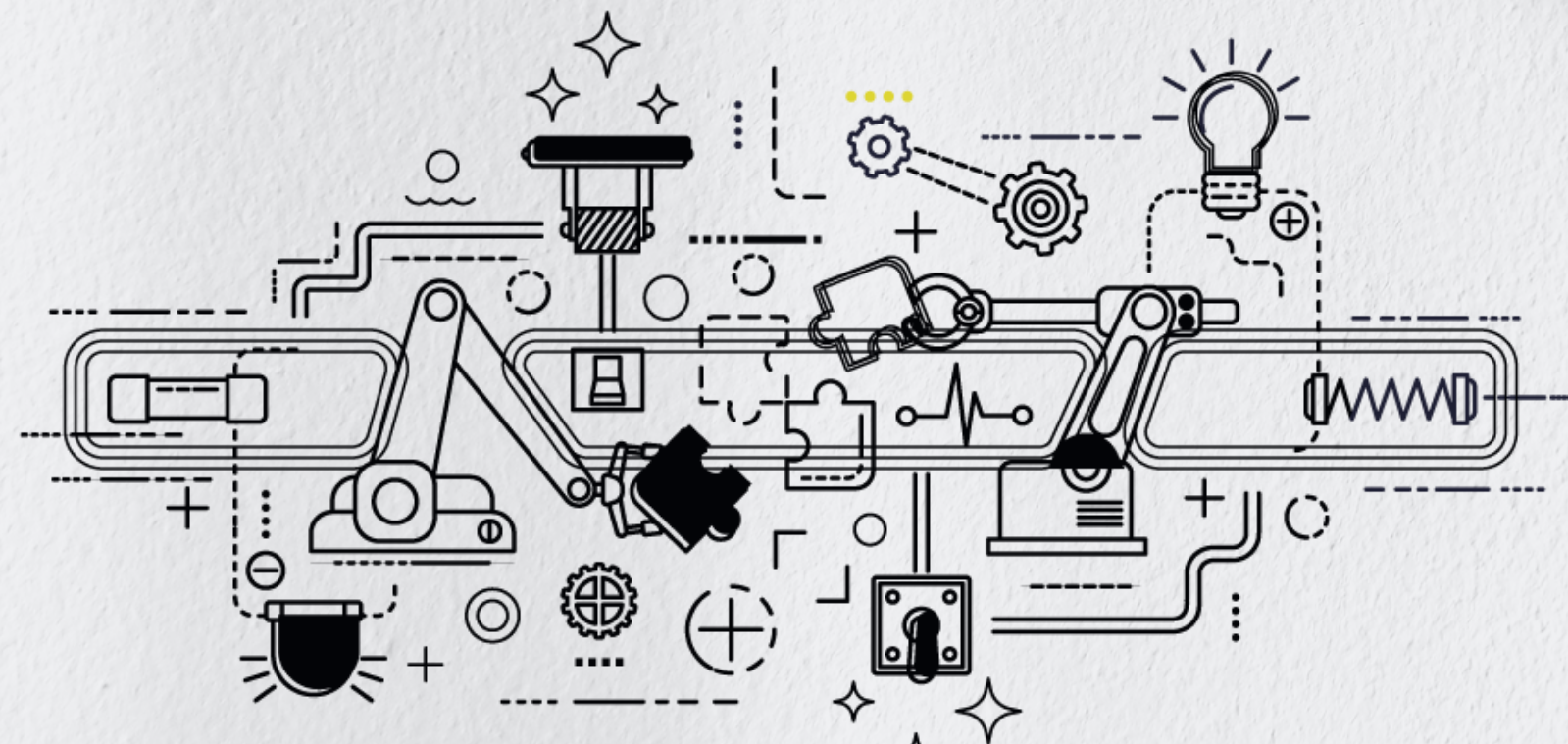
## CLIENT:

Johnson & Johnson The Anspach Effort, Inc.,

## INDUSTRY:

Medical Devices and Industrial Equipment

The Anspach Effort, Inc., a Johnson & Johnson company and market leader in high-speed instrumentation for neurosurgery, neurotology, otology, and orthopedics, possessed an uncharacteristic low-tech approach to production scheduling: It relied on paper, spreadsheets, and a whiteboard to schedule and track its production cycle.



# Overview

## *Switches from Spreadsheets and whiteboards to PlanetTogether APS*

Bruce Hays, Anspach's director of material systems and information technology, describes the challenge:

### PROBLEM 01

"Each product involves hundreds of individual processes. Multiply that by 11,000 products and 2,000 concurrent production orders."

### PROBLEM 02

"Production is further complicated by the critical demand nature of manufacturing medical equipment—we frequently need to reschedule a process to provide a vital piece of equipment sooner than originally scheduled."

# TIME IS MONEY

“WE IMMEDIATELY APPRECIATED THE USER-FRIENDLY INTERFACE”

BRUCE HAYS, Director Material

■ PRODUCTION ORDERS INCREASE

90%

■ EQUIPMENT SOONER

89%

■ MANAGEMENT

68%



# WORLD-CLASS COFFEE SETS **QUALITY** STANDARDS WITH **HEAVYWEIGHT** APS PLATFORM

---

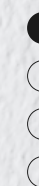
## **CLIENT:**

Atlantic Solutions Coffee

## **INDUSTRY:**

Medical Devices and Industrial Equipment

Today, Atlantic Coffee maintains 1.4 million square feet of facilities; the world's largest natural decaffeination plant; the only fully integrated private-label instant coffee manufacturing operation in North America; 11 roasting lines; 22 packing lines 45 grinding lines, all supplied from the leading coffee port in the world, the Port of Houston, home to Atlantic Coffee.



# Overview

## *Outdated* scheduling software

Jaime Ozuna, Atlantic's Production Scheduler, has trouble recalling the specifics of their old system. But according to Ozuna here are some problems they solve with PlanetTogether APS

### PROBLEM 01

"We had no choice but to schedule production machines one by one on separate pages"

### PROBLEM 02

"Challenge in efficiency standards between its existing facilities and the acquisition. It was not user friendly"

# PRODUCTION SCHEDULING TIME IN HALF

“ I highly recommend PlanetTogether. Life will be easier for any manufacturer who chooses PlanetTogether; it’s an efficient scheduler, plain and simple, and overall great product and so worth the investment ”

**JAIMÉ OZUNA**, Director Material

■ PRODUCTIVITY

90%

■ EQUIPMENT SOONER

89%

■ MANAGEMENT

68%





# GOES FROM SPREADSHEETS TO SMART FACTORY

## CLIENT:

Bema Incorporated

## INDUSTRY:

Flexible Packaging Printing and Manufacturing

Bema Incorporated has developed the most innovative printing and manufacturing processes in the flexible packaging industry. Bema has key competencies is designing and manufacturing stand-up, zippered, liquid, shaped and spouted pouches. The Bema Transparent Bag Company started in 1957 on the southside of Chicago and celebrated the company's 50th anniversary in 2019.



# Overview

## *Switches from Spreadsheets and whiteboards to PlanetTogether APS*

Chuck Dipierto, Operations Manager at Bema describes how detrimental the process was:

### PROBLEM 01

"There was no Enterprise Resource Planning in place; the job tickets were generated by Microsoft Excel spreadsheets"

### PROBLEM 02

"Our top employee who did this work spent 50% of his time doing data entry during the week, and created a final schedule that took a full day on Saturday, every single week for many years"

# TOTAL MAKEOVER

“People could not believe what they were suddenly **capable** of doing from their computer, and they all have **customizable dashboards** to focus on just their customers and shipments, everything their work focus is connected to, depending on their role”

**Chuck Dipierto**, Operations Manager

■ ENHANCE EFFICIENCY

96%

■ ACHIEVABLE PRODUCTION SCHEDULE

50%





# PlanetTogether APS Free demo



- ✓ Gain total visibility of all your operations
- ✓ A highly-intuitive interface that allows you to visualize and reroute bottlenecks
- ✓ Perfect for Manufacturing and Food & Beverages facilities
- ✓ Scalable for a single plant or multi-plant enterprises

**REQUEST DEMO**

